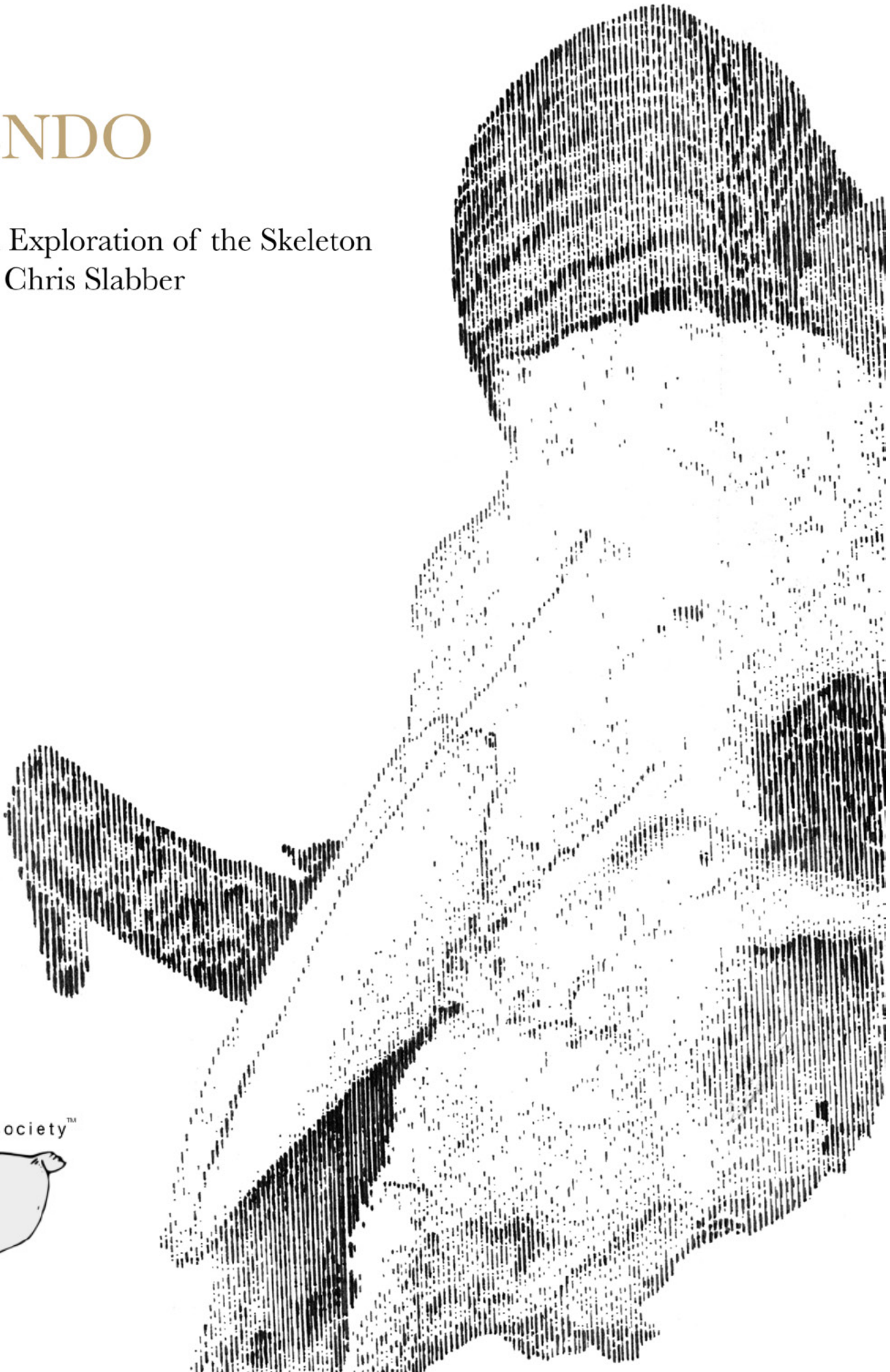
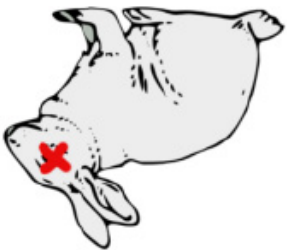


ENDO

An Exploration of the Skeleton
By Chris Slabber



deadbunnysociety™



ENDO, meaning inside, within or internal, can in this context be seen as both noun and / or verb. Hence it would be possible to “explore inside” as well as see “the inside”, but by adding a “third dimension” the viewer could start to see a psychological and emotional interior as well.

With this body of work, Slabber wants to discard the notion that the skeleton is a representation of the temporary nature of life and the evil or unknown and would rather explore the physical beauty of the object in itself and its constructed composition. The subject matter ranges from; immediate observation to the imaginative, the psychological implications and the cross cultural ancestral connections.

The exhibition consists of multiple pieces using 3 different mediums – Ink Illustration, mixed media collage and photo manipulation. The exhibition will consist of both original pieces and prints.

These 3 mediums are spread across 4 different explorations.

1. Hybrids: This series is a documentation of skeletons of ancient Greek and Egyptian mythological creatures. The concept is to “provide proof” in the form of the explorers observational drawings that these ancient beasts existed during another age. Slabber explores the idea that if there is documented observations of their skeletons, they must have existed in order to be studied and documented.

The series so far consists of 7 different creatures – The Mermaid, The Satyr, The Minotaur, The Centaur, The Sphinx, Anubis and the Echidna.

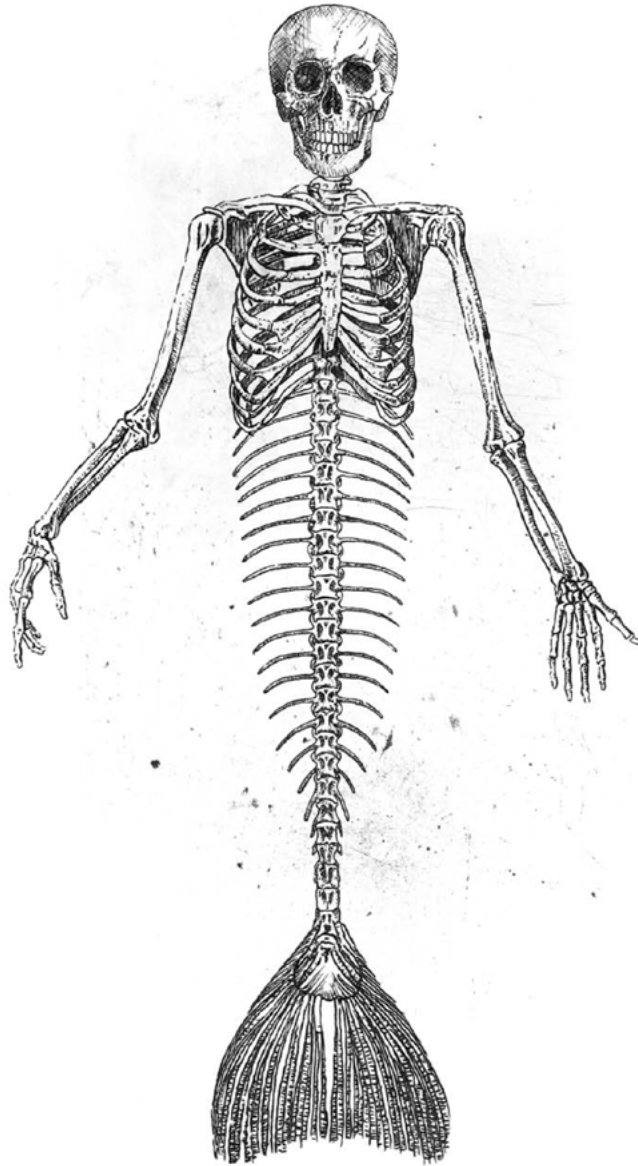
2. Lifelines: This series of works represent the documented observations of the skeletal objects to simply appreciate and study the beauty of the skeleton. The works aim to lure in the viewer into an observational exploration with the extreme detail in which the objects are rendered. Each image is rendered by using straight lines made in the same direction, and combining 3 different pen nibs in order to create depth and shape. Up close the viewer will only see lines, but standing further away the complete image becomes clear.

3. Rorschach: With this series of works Slabber draws the viewer into a self referential reading of the drawing, afforded by the Rorschach tests. He creates custom Rorschach tests and blends each one with a complementing photograph of a skull – human and animal. Then using digital manipulation, he treated each final image to have a “solarized” colour effect. The image colour is pushed to a gold hue and is then printed on aluminium sheet. The contrast between the silver background and the gold foreground creates a hypnotizing effect that, when looked at for long enough, will put the viewer in a light meditative state, therefore allowing the viewer to see inside the observer’s subconscious.

4: Ancestral: This is a small installation that is more narrative based. The physical narration is to explore a genetic historic trace that can be used to trace back human ancestry to the earliest civilisations. The concept is executed by using portrait photographs of modern humans and fusing them with skulls from the Cro-Magnon era via photo manipulation. The treatment is influenced by the wet plate photography portraits from the 1850’s. The treatment adds mystery and intrigue to the series, that entices the viewers need to construct meaning and narrative.

HYBRIDS

Plate 11

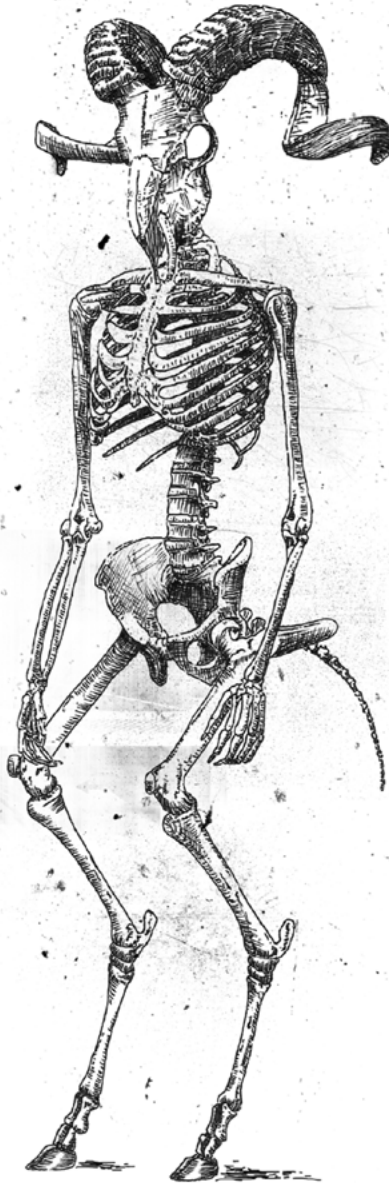


Skeleton of the common Mermaid.

Mermaid
279mm x 420mm
Printed on Fabriano
Edition of 25 (23-25 available)
R 1450.00 Unframed

HYBRIDS

Plate 666



Skeleton of the fearless Satyr.

Satyr
279mm x 420mm
Printed on Fabriano
Edition of 25 (17-25 available)
R 1450.00 Unframed

HYBRIDS

Plate 5

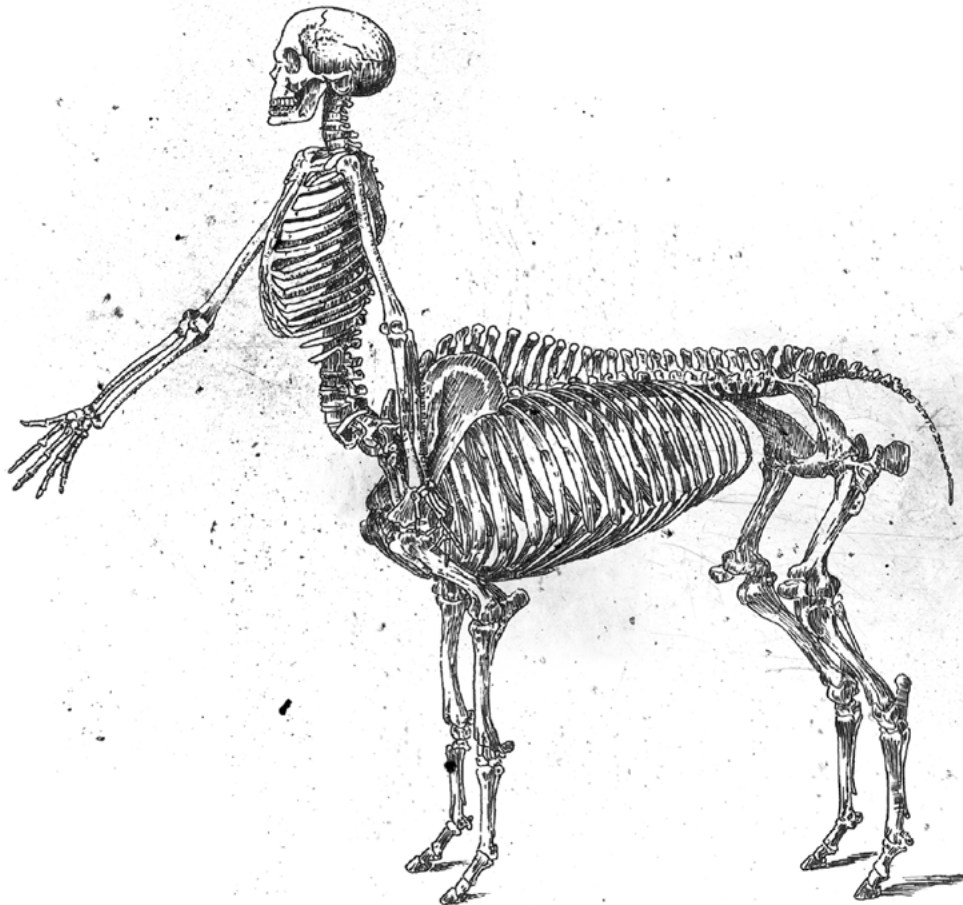


Skeleton of the labyrinth dwelling Minotaur.

Minotaur
279mm x 420mm
Printed on Fabriano
Edition of 25 (8-25 available)
R 1450.00 Unframed

HYBRIDS

Plate 6



Skeleton of the proud Centaur.

Centaur
279mm x 420mm
Printed on Fabriano
Edition of 25 (3-25 available)
R 1450.00 Unframed

HYBRIDS

Plate 42

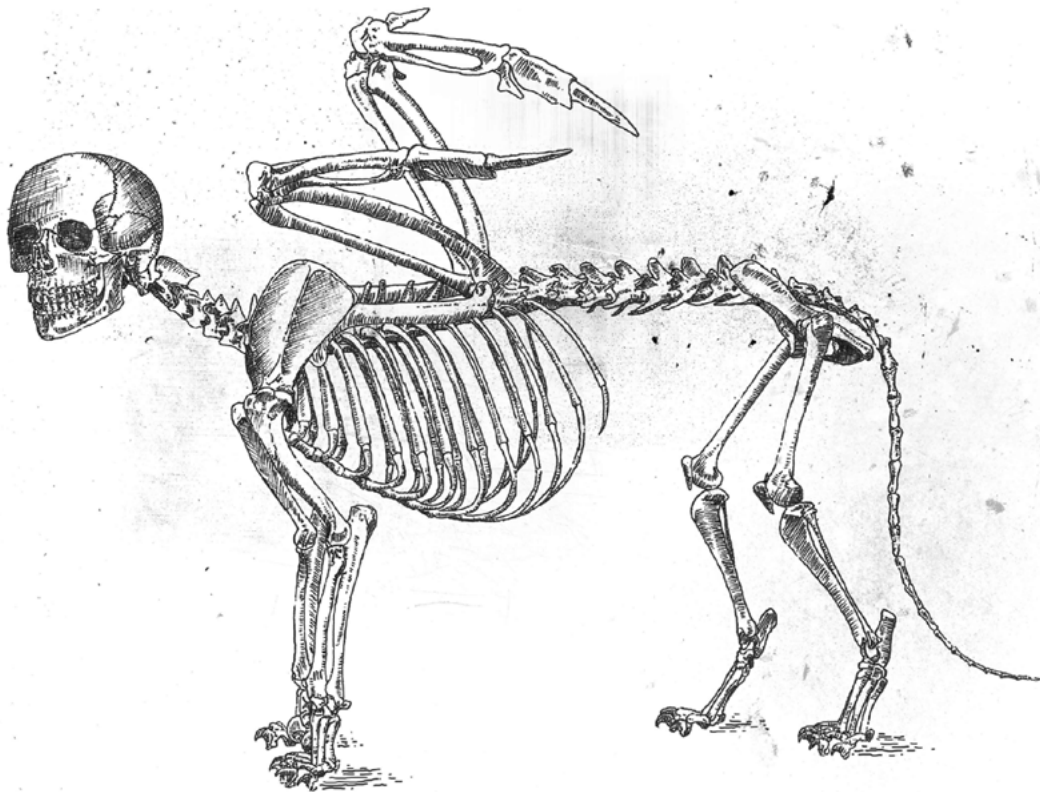


Skeleton of Anubis the Embalmer.

Anubis
279mm x 420mm
Printed on Fabriano
Edition of 25 (1-25 available)
R 1450.00 Unframed

HYBRIDS

Plate 9

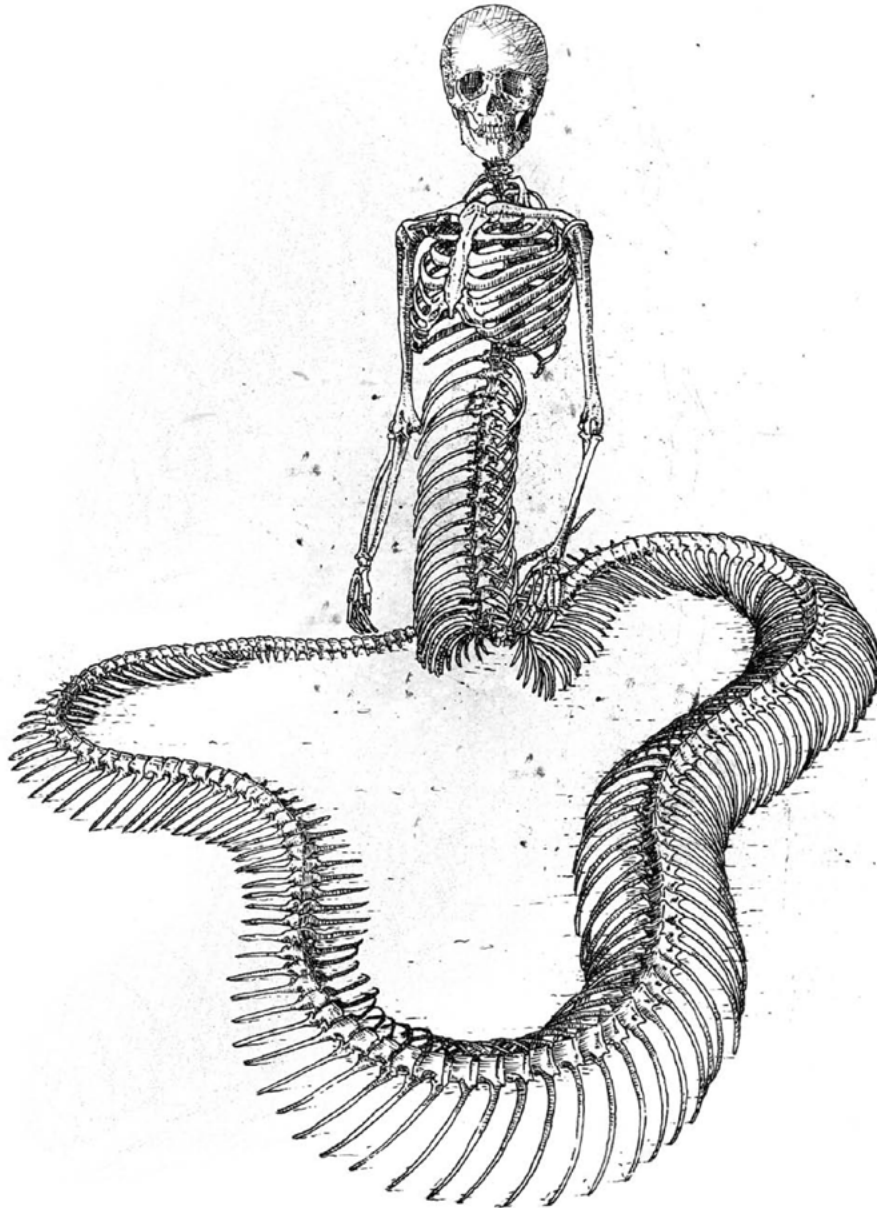


Skeleton of the merciless Sphinx.

Sphinx
279mm x 420mm
Printed on Fabriano
Edition of 25 (1-25 available)
R 1450.00 Unframed

HYBRIDS

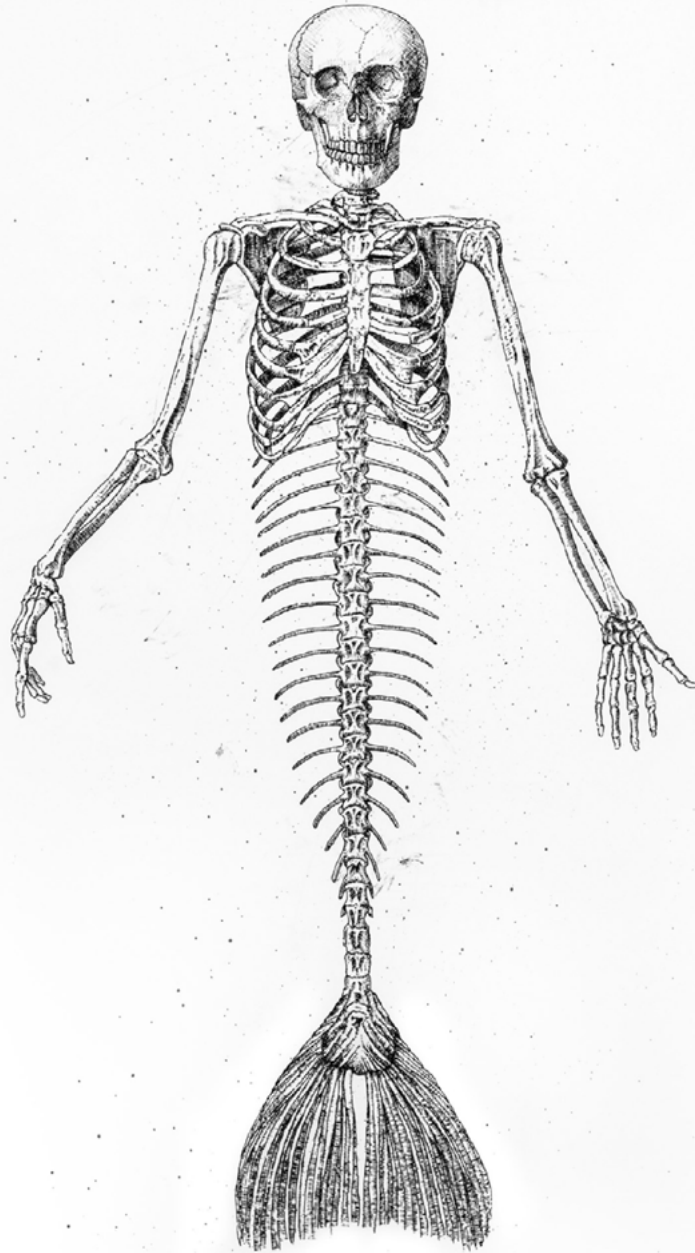
Plate 01



The Dungeon Dwelling Echidna.

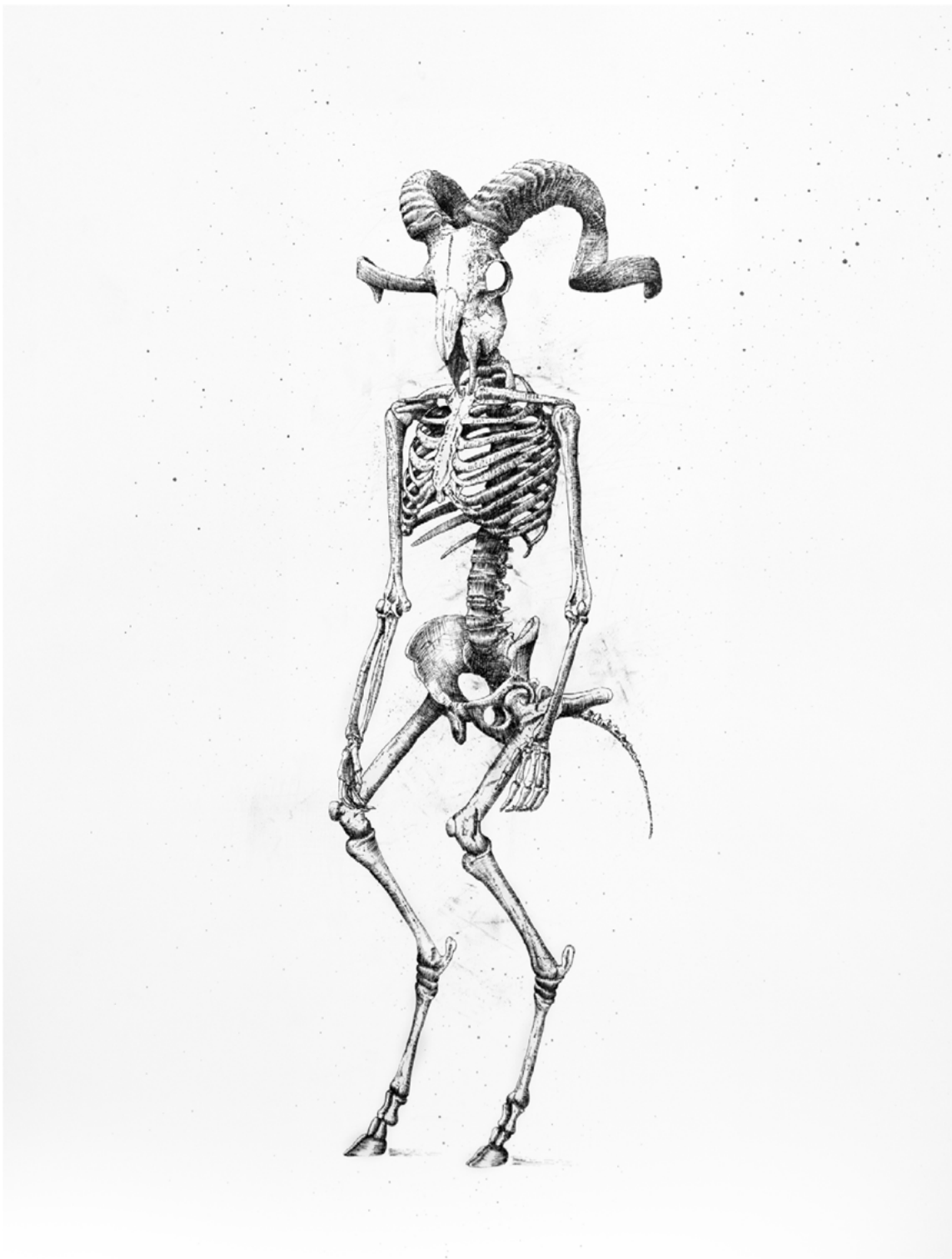
Echidna
279mm x 420mm
Printed on Fabriano
Edition of 25 (1-25 available)
R 1450.00 Unframed

HYBRIDS



Mermaid (Original)
700mm x 1000mm
Ink Illustration on Fabriano
1/1
R 20 000.00

HYBRIDS



Satyr (Original)
700mm x 1000mm
Ink Illustration on Fabriano
1/1
R 20 000.00

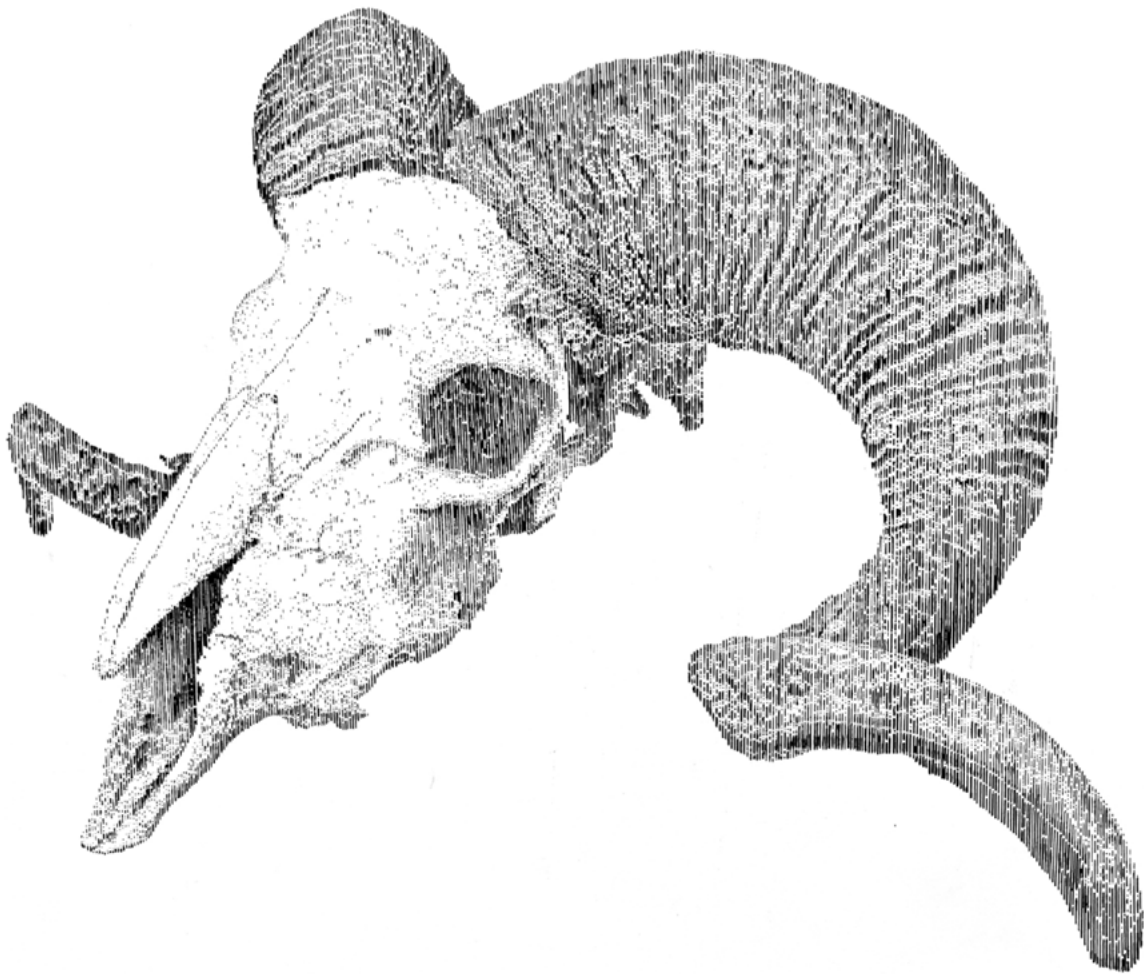
LIFELINES



Portrait of Us (Original)
700mm x 1000mm
Ink Illustration on Fabriano
1/1
R 25 000.00

Portrait of Us
Print editions
210 x 297mm
digital print on Fabriano 200 gsm
Edition of 25 (1 - 25 available)
R 2100.00

LIFELINES



Offering (Original)
350mm x 500mm
Ink Illustration on Fabriano
1/1
SOLD

Offering
Print editions
210 x 297mm
digital print on Fabriano 200 gsm
Edition of 25 (1 - 25 available)
R 2100.00

LIFELINES



The Source (Original)
350mm x 1000mm
Ink Illustration on Fabriano
1/1
R 22 500.00

The Source
Print editions
210 x 297mm
digital print on Fabriano 200 gsm
Edition of 25 (2 - 25 available)
R 2100.00

ANCESTRAL



Ancestral I

594 x 420mm

Photography and photo manipulation

Printed on 200 gsm Fabriano Accademia

Edition of 10 (1 - 10 available)

R 6700.00 (framed) | R 5450.00 (unframed)

ANCESTRAL



Ancestral II

594 x 420mm

Photography and photo manipulation

Printed on 200 gsm Fabriano Accademia

Edition of 10 (1 - 10 available)

R 6700.00 (framed) | R 5450.00 (unframed)

RORSCHACH



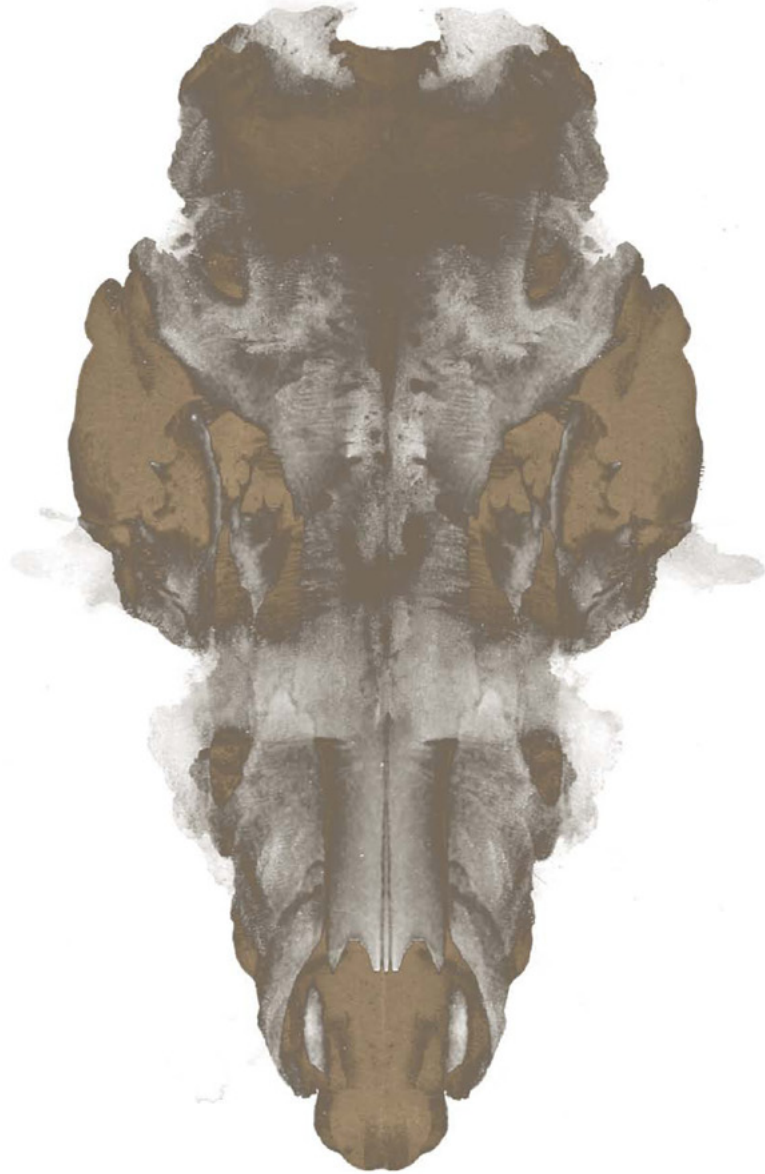
Rorschach I
210 x 148mm
Mixed Media Printed onto Aluminium Dibond
Edition of 10 (1 - 10 available)
R 3350.00

RORSCHACH



Rorschach II
210 x 148mm
Mixed Media Printed onto Aluminium Dibond
Edition of 10 (1 - 10 available)
R 3350.00

RORSCHACH



Rorschach III
210 x 148mm
Mixed Media Printed onto Aluminium Dibond
Edition of 10 (1 - 10 available)
R 3350.00

RORSCHACH



Rorschach IV
210 x 148mm
Mixed Media Printed onto Aluminium Dibond
Edition of 10 (1 - 10 available)
R 3350.00

RORSCHACH



Rorschach V
210 x 148mm
Mixed Media Printed onto Aluminium Dibond
Edition of 10 (1 - 10 available)
R 3350.00

RORSCHACH



Rorschach VI
210 x 148mm
Mixed Media Printed onto Aluminium Dibond
Edition of 10 (1 - 10 available)
R 3350.00